

## ÿÿÿÿ CRYSTAL START-2

[Evgeny Karpov](#)

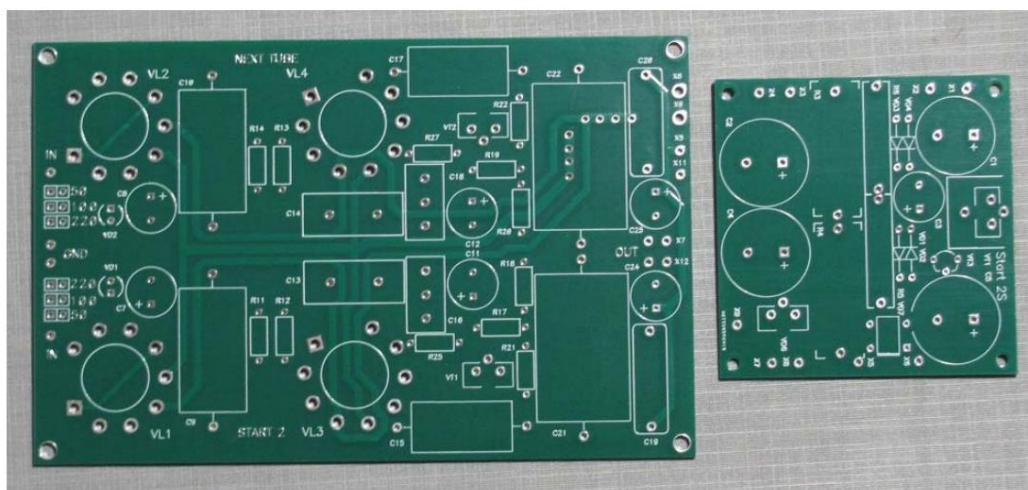
A simple tube phono stage - part 2

The corrector was implemented several times by different people, and different components. It showed excellent results, both in terms of sound quality and repeatability. The scheme has been slightly corrected. Basically, the changes affected the design and types of components used. More

The widespread use of SMD components has made it possible to reduce the size of the board and optimize the routing. The power supply was placed on a separate board.

During the manufacture of the boards, it was immediately planned that the device could be assembled independently by amateurs - the boards were marked, and a set of documentation was developed containing all the necessary information for assembling and selecting a case. How the boards look like is shown in Figure 1, and the documentation can be found [here](#) A small number of these kits are available for order. 

---



Picture 1

The boards already assembled are shown below, and an example of using a standard metal case is shown.

